



Gütermann
creativ



EN



Degree of difficulty

Instruction **CLOTHES PEG BAG**

Instruction CLOTHES PEG BAG



Materials from Gütermann

- Sew-all thread in a matching shade
- Cotton fabric 145 cm wide, collection LONG ISLAND:
- 0.40–0.60 m flower pattern with birds in rosé-pink-turquoise
- 0.40–0.60 m small star pattern in rosé-light beige
- 1.20 m pigtail band in rosé, 6 mm wide
- 1.20 m bias binding in grey

In addition

- 1 wooden clothes hanger, approx. 38–40 cm wide
- 0.40–0.60 m double-sided coated volume fleece HH 650, 150 cm wide

Tools

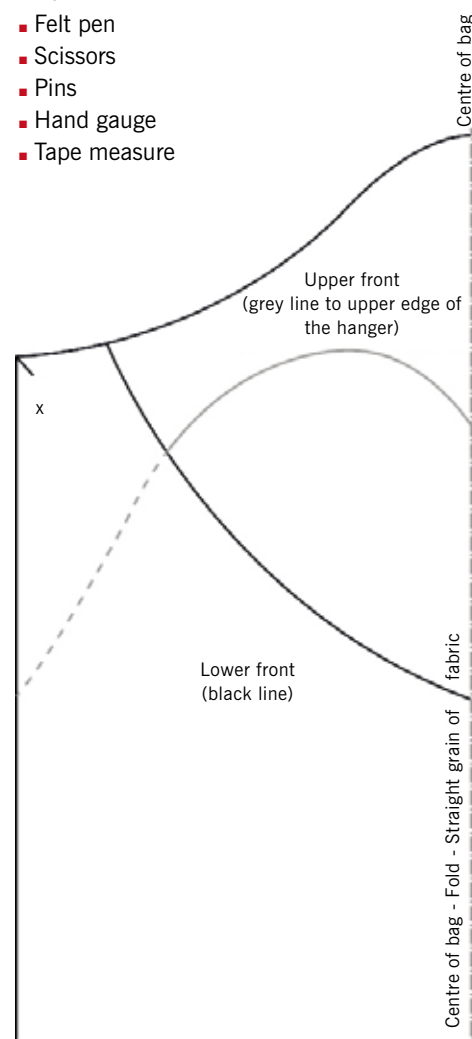
- Sewing machine
- Iron
- Felt pen
- Scissors
- Pins
- Hand gauge
- Tape measure

Make the pattern

Draw a rectangle with half the width of the hanger + 0.5 cm and a height of 40–45 cm on the pattern paper. Extend the right edge of the rectangle upwards (= centre line). Now lay the hanger above the rectangle in such a way that the hook is above the extension of the centre line and at the same time the left edge of the hanger ends 1 cm away from the upper left corner of the rectangle. Draw the curved shape of the hanger along the upper edge. Draw the heart-shaped upper section and the cut out lower section freehand. Lay the pattern paper over the pattern drawing and trace the lower and upper sections separately. Cut out the upper and lower parts of the back and front sections.

Cutting

- Small star fabric: lining of back section in full 1x; lining of lower front section 1x; lining of upper front section 1x;
- Flower fabric: back section in full 1x; lower front section 1x; upper front section 1x.
- Volume fleece HH 650: back section in full 1x; lower front section 1x; upper front section 1x.
- Cut the parts with 0.5 cm seam allowance on the hemmed edges and 1 cm seam allowance on the outer edges.





1. Lay the correct pieces of volume fleece between the wrong sides of the lining and fabric like a sandwich. Join all three layers with the iron set to cotton heat. First lightly attach the three layers so that they cannot slip out of place. Then lay a damp cloth on the fabric and apply the iron in steps of 15 seconds.



2. Fold the grey bias binding along its length and iron in the fold. Unfold the binding again. Pin the edge, right sides facing, on the front lower section while pulling the lower section apart at the point. Sew the tape at the iron fold of the seam allowance. Fold the bias binding with a folded seam allowance around the edge to the inside. Pin the binding on the inside adjoining the seam line. Sew the tape on from the inside close to the edge.



3. Sew the inside corner of the bias binding as a dart: to do this fold the front section down the middle with right sides facing. Sew a 5 mm wide dart from the fold edge at an angle, reducing to a point and lock the seam. Iron the dart to the side or open flat. Pin the pigtail ribbon on the front over the attachment seam and sew it on at the centre.



4. Enclose the heart-shaped edge of the upper front section with bias binding as described above in step 3. Do not sew a dart here but rather insert a small fold into the bias binding at the corner, both at the attachment seam and at the fixing seam. Lay the pigtail ribbon over the attachment seam on the bias binding on the right side also and sew it on at the centre.



5. Now connect all the parts: lay the upper front section on the back section with right sides facing. Lay the lower front section on this and make sure that the outer edges of the rectangle match. Pin the outer edges together and sew the seam all around at a width of 1 cm. Caution: leave a 0.5 cm slit at the top centre for the hook on the hanger. Trip the seam allowances all around and tidy together.



6. Finally turn the bag to the right side. Form the edges and corners and iron the bag. Insert the hanger through the slit at the top centre.

Gütermann GmbH

Landstr. 1

DE- 79261 Gutach-Breisgau

Tel +49 76 81 21-0

Fax +49 76 81 21-449

mail@guetermann.com

www.guetermann.com

